

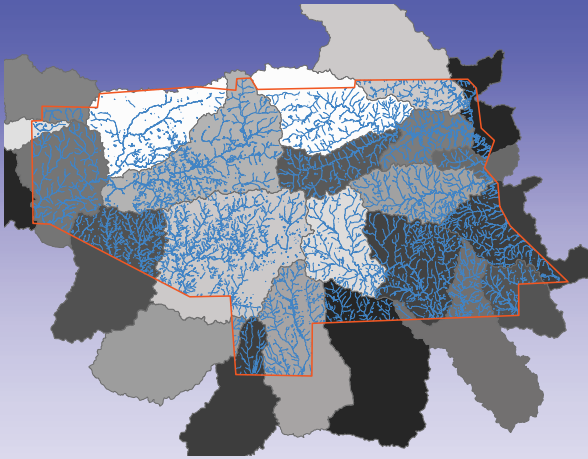


## Storm Water Management Program

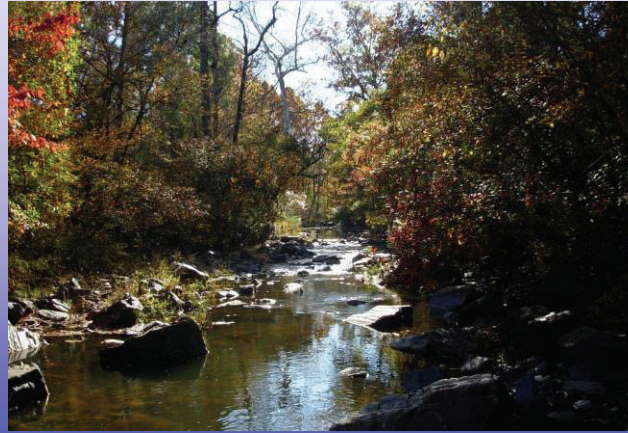
*In May of 2001 the governmental agencies that make up ALOA joined together to address EPA's upcoming Phase II requirements.*

*This brochure is one of a series of publications regarding storm water issues in Lee County.*

*The series is produced by the ALOA Storm Water Advisory Panel and is intended to protect, maintain, and restore the chemical, physical, and biological integrity of local waters in order to enhance the quality of life for our citizens.*



## *Our Local Watersheds*



*A sunny fall afternoon on our beloved Chewacla Creek*

## Contact Information

For more information regarding your community's storm water program please contact the following agencies:

City of Auburn – Department of Water Resource Management  
334-501-3077  
[www.auburnalabama.org/wrm](http://www.auburnalabama.org/wrm)

Lee County – County Engineer  
334-745-9792  
[www.leeco.us](http://www.leeco.us)

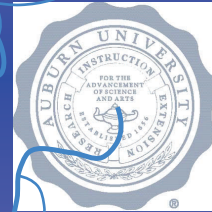
City of Opelika – Department of Public Works  
334-705-5400  
[www.opelika.org](http://www.opelika.org)

Auburn University – Risk Management and Safety  
334-844-4805  
[www.auburn.edu/administration/rms/](http://www.auburn.edu/administration/rms/)

*A Publication Presented by*



## *Our Local Watersheds*



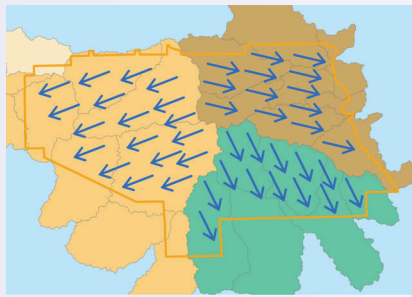
# *ALO A*

*“Local Citizen Groups and Governments Working Together for Clean Water”*



## So, WHAT IS A WATERSHED?????

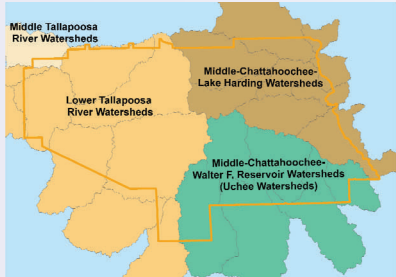
By definition, a watershed is defined as a collective area of land that drains to a particular point (also referred to as drainage basin). By this definition a watershed can be delineated (demarked and mapped) from any particular point along a concentrated path



General Surface Flows in Lee County

of flow; usually a stream, creek, or river. However, no matter what method of delineation or point of origin, they are all subsequently part of a larger whole. For example, Lee County is divided along its north-south axis between land that drains to the Tallapoosa River and land that drains to the Chattahoochee River. Each of these river basins collects water from literally hundreds of smaller watersheds before finally discharging into the Gulf of Mexico.

## WHICH WATERSHED DO YOU LIVE IN?



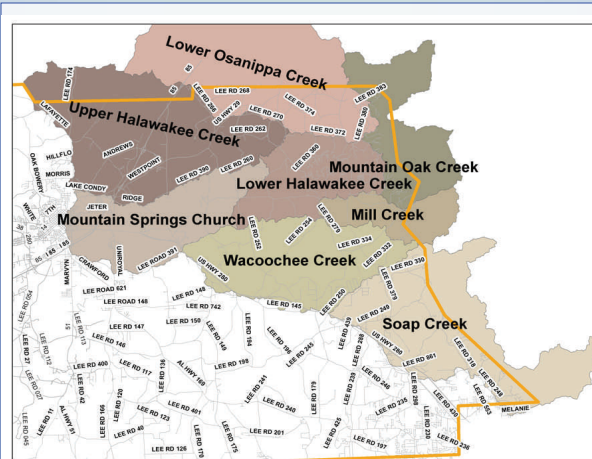
Sub-Basins (HUC 12) of Lee County

Lee County is divided by two major river basins; of which the eastern half drains to the Chattahoochee River and the western half drains to the Tallapoosa River. These larger river basins are further divided into sub-basins (also known as 12-digit hydrologic unit codes),

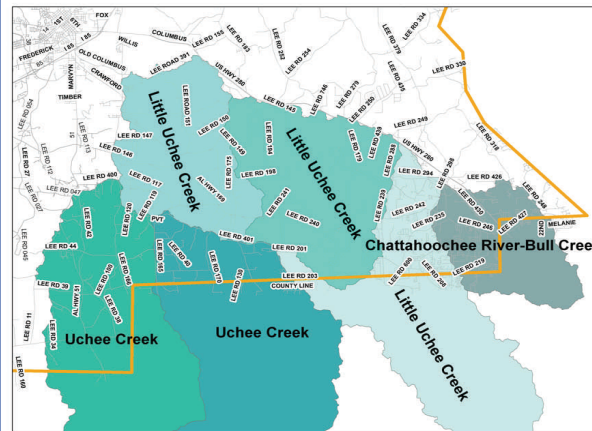
of which there are 20 within Lee County alone. Some of the better known names of the streams and creeks to which these watersheds drain into are Saughatchee Creek, Chewacla Creek, Uchee Creek, Loblockee Creek, Uphapee Creek, and Choctawfaula Creek. These streams and creeks, along with the smaller tributaries that feed them, make up more than 2,700 miles of waterways in Lee County alone (see back cover). This brochure is intended to enhance your education and awareness of these wonderful natural resources and to enable you to identify which watershed you live in.



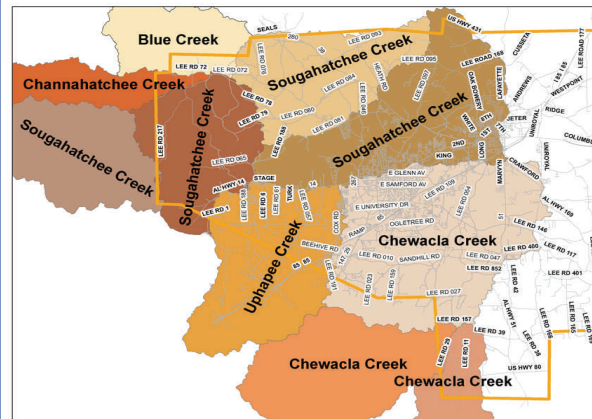
Chewacla Creek in Auburn



Middle Chattahoochee-Lake Harding Sub-Basins



Middle-Chattahoochee/Walter F. Reservoir Sub-Basins



Tallapoosa River Sub-Basins

## ACTIVITIES IN OUR WATERSHEDS!!!

Education and outreach is a major component of the ALOA mission. Many of these educational opportunities involve a hands-on approach with local school children, university students, and community volunteers. Simply being outdoors and becoming aware of the rich abundance and beauty of our local water resources and the many purposes they serve is as important of an experience as any classroom can provide. Some of these great opportunities provided by ALOA stakeholders in



Streamside Classrooms



Rotary Club Volunteers

2008 include the restoration of an unnamed tributary stream in the Town Creek Watershed (sub-watershed of Chewacla Creek), a riparian restoration project at the Opelika Municipal Park, storm drain marker installation identifying the receiving watershed/waterbody that particular storm drains discharge to, streamside classrooms for local 5th and 6th graders, rain barrel construction and installation workshops, and many more. It is through these activities that a true sense of the intricate network of our watersheds is understood. The simple understanding of which watershed you live in is not informative enough in itself to promote a lifelong understanding and respect that our local watershed demand. With a newly found awareness and respect, it is ALOA's hope that the knowledge and experiences it has helped to provide will reverberate throughout the community and encourage others to get involved in protecting Alabama's most intricate and beautiful water resources. To learn more about the upcoming and/or annual activities that may be going on in your watershed in the future please contact any of the participating ALOA stakeholders.



Stormdrain Markers

**FOR MORE INFORMATION ON HOW TO GET INVOLVED VISIT ANY OF THESE ORGANIZATIONS:**

- [WWW.AUBURNALABAMA.ORG/WRM](http://WWW.AUBURNALABAMA.ORG/WRM)
- [HTTP://WWW.ACES.EDU/DEPT/FISHERIES/AWW/SWAMP/](http://WWW.ACES.EDU/DEPT/FISHERIES/AWW/SWAMP/)
- [HTTP://WWW.ACES.EDU/DEPT/FISHERIES/AWW/AWW](http://WWW.ACES.EDU/DEPT/FISHERIES/AWW/AWW)
- [WWW.CHEWACLA.NET](http://WWW.CHEWACLA.NET)
- [WWW.CLEANWATERPARTNERSHIP.ORG/OLD](http://WWW.CLEANWATERPARTNERSHIP.ORG/OLD)
- [WWW.LEE.AL.NACDNET.ORG](http://WWW.LEE.AL.NACDNET.ORG)